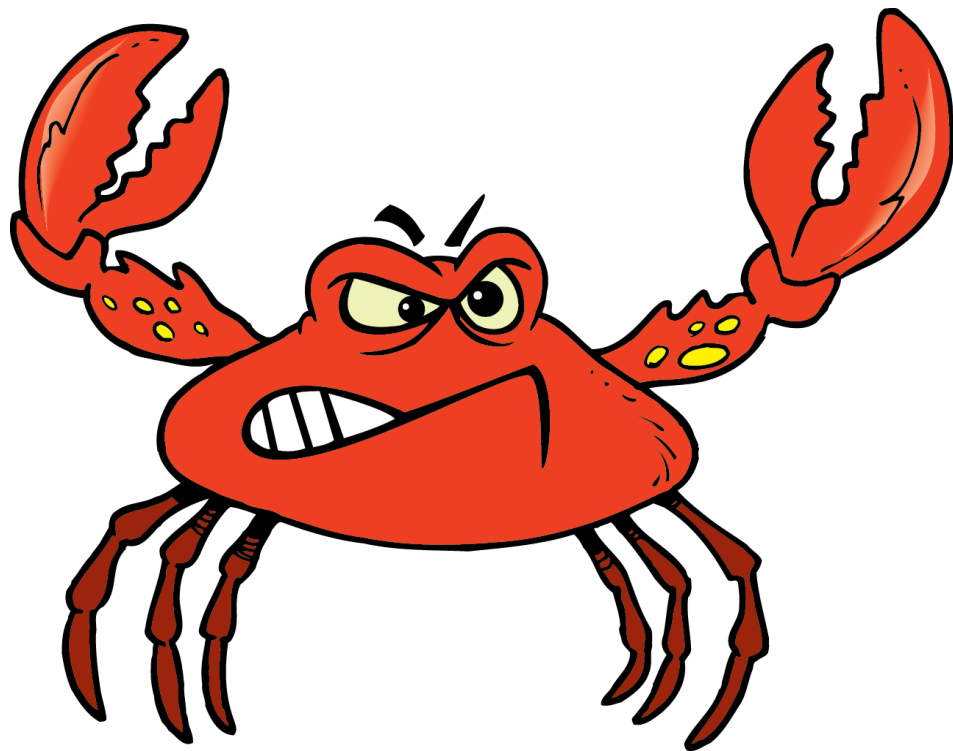


# Toons Word Family Cards

Use the word family kid cards to supplement instruction when teaching the concept of onset and rime or word families. The pictures in this set match those on the word family chart from Carl's Corner and serve as anchor words and pictures. It is recommended that teachers print the set in color on cardstock and laminate for durability.

Developed by Cherry Carl and Illustrated by Ron Leishman  
Images©Toonaday.com/Toonclipart.com



crab



f face



snack



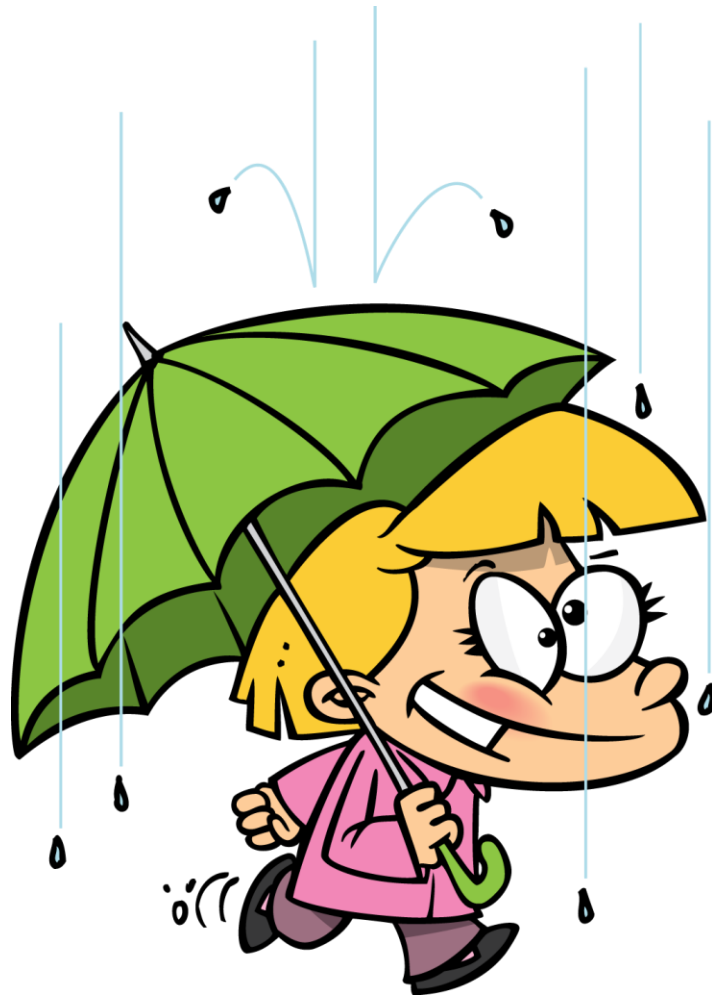
dad



bag



nail



rain

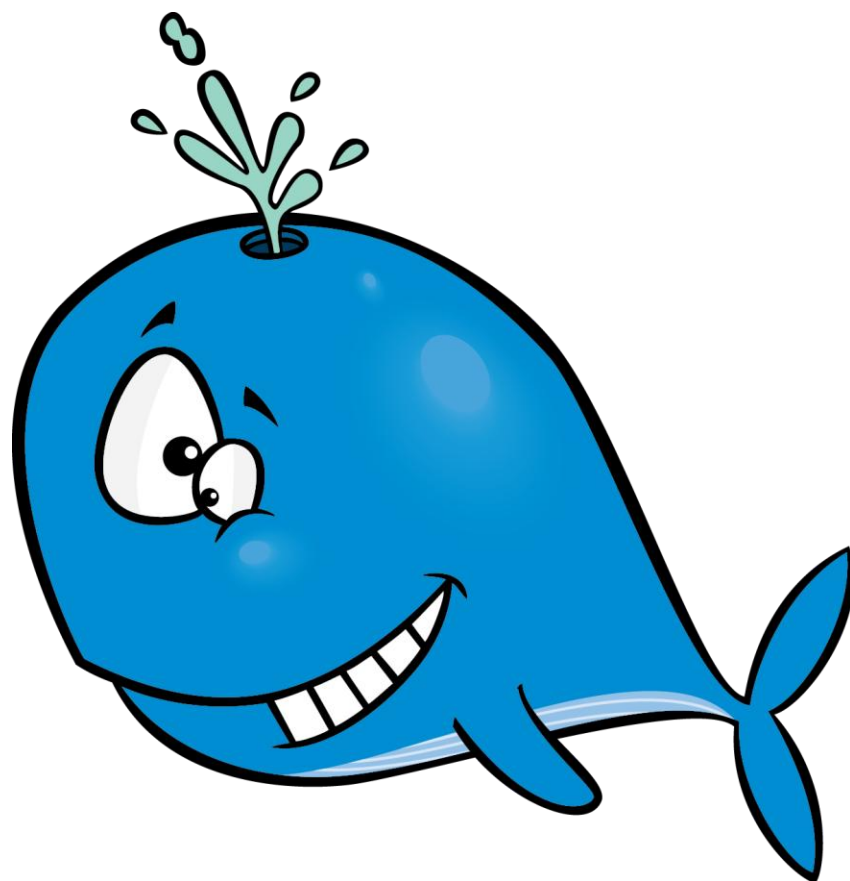




chair



cake



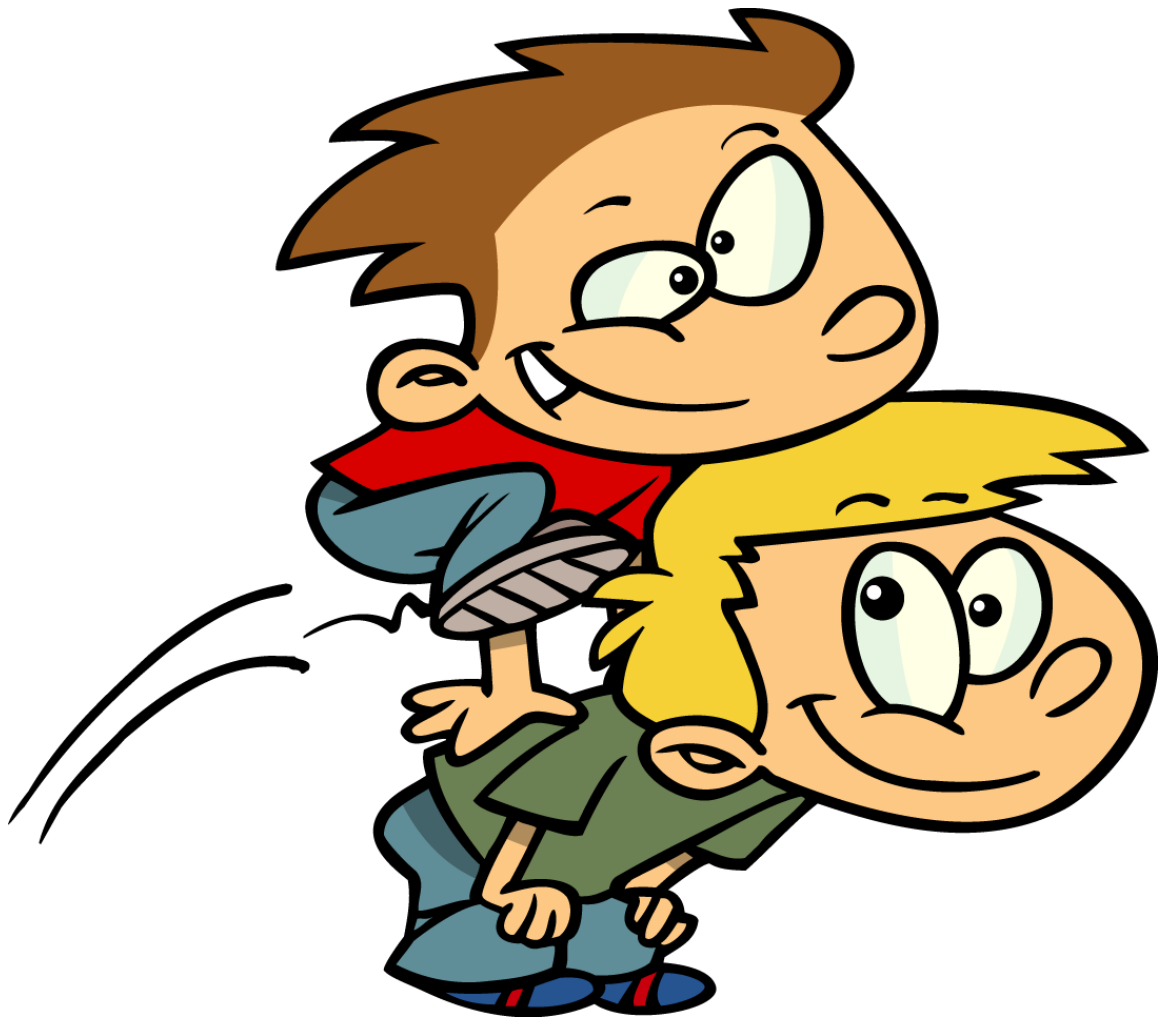
whale



ball



j jam



game



ran



sand





hang



drank



ant



map



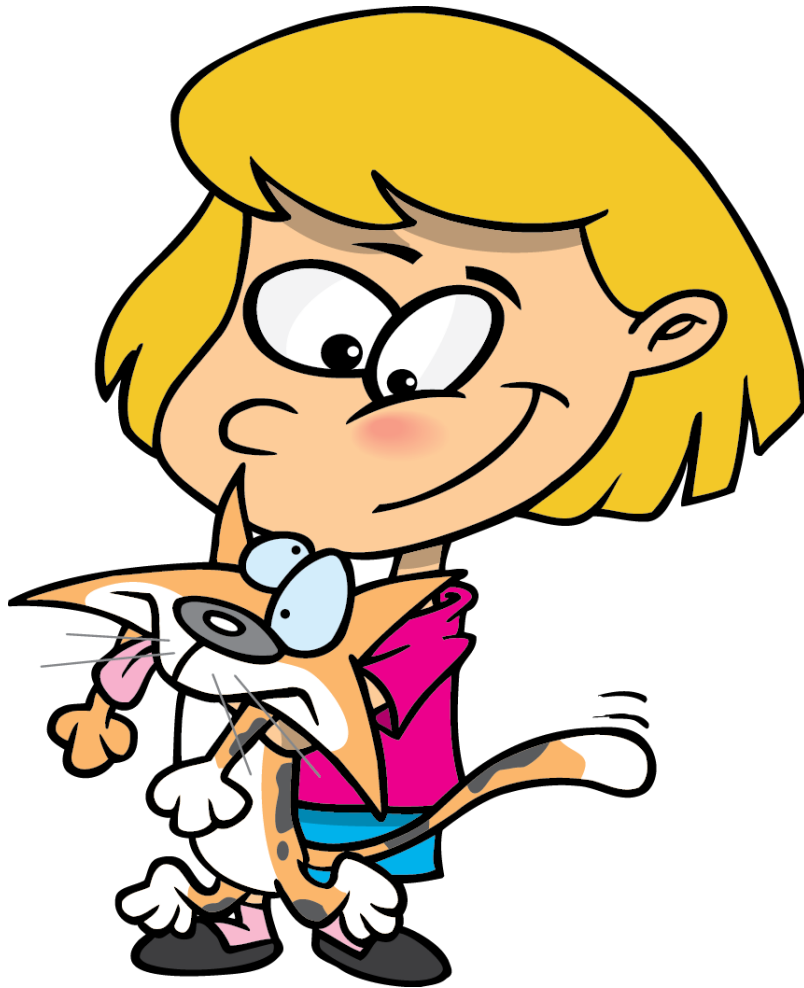
car



cart



splash

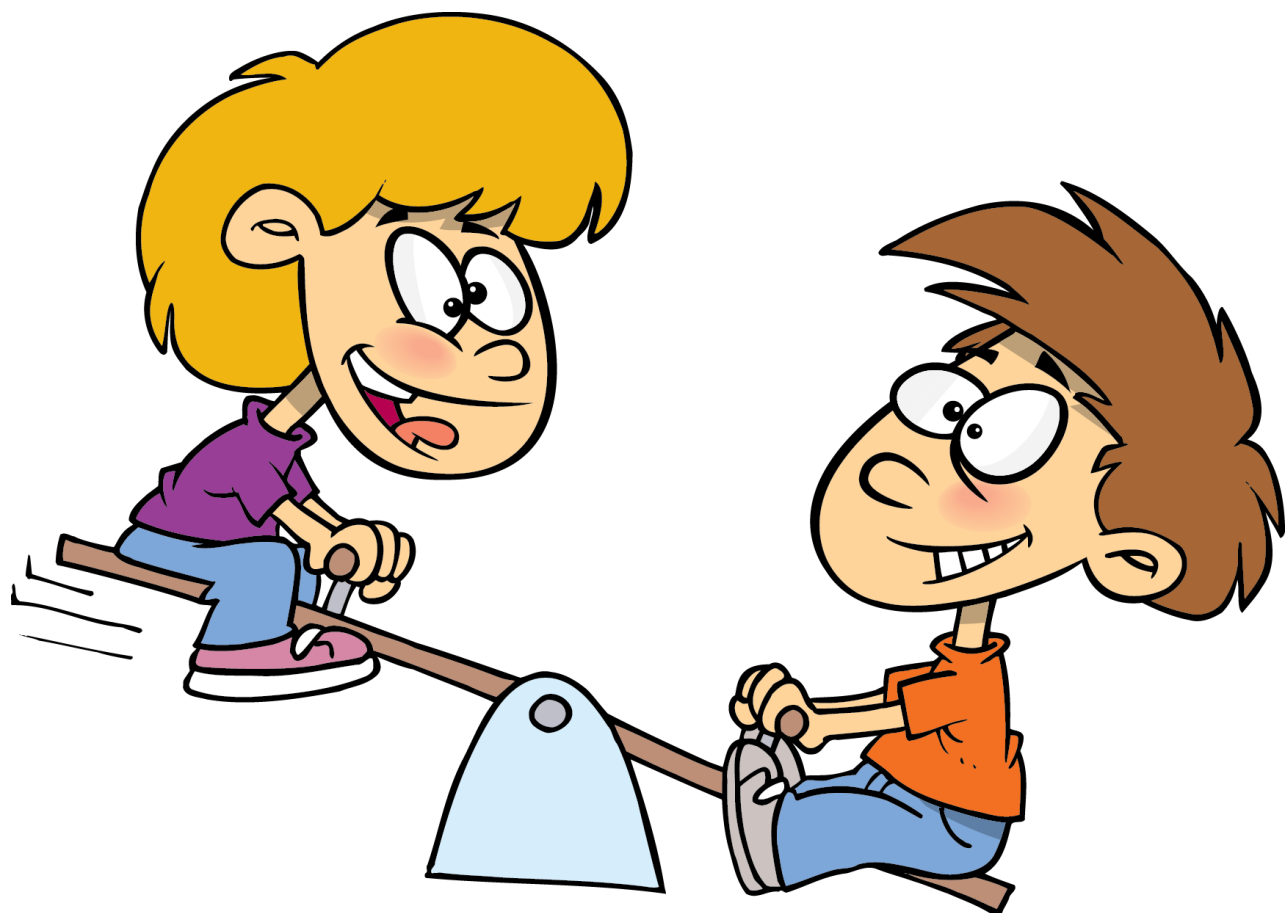


cat





skate



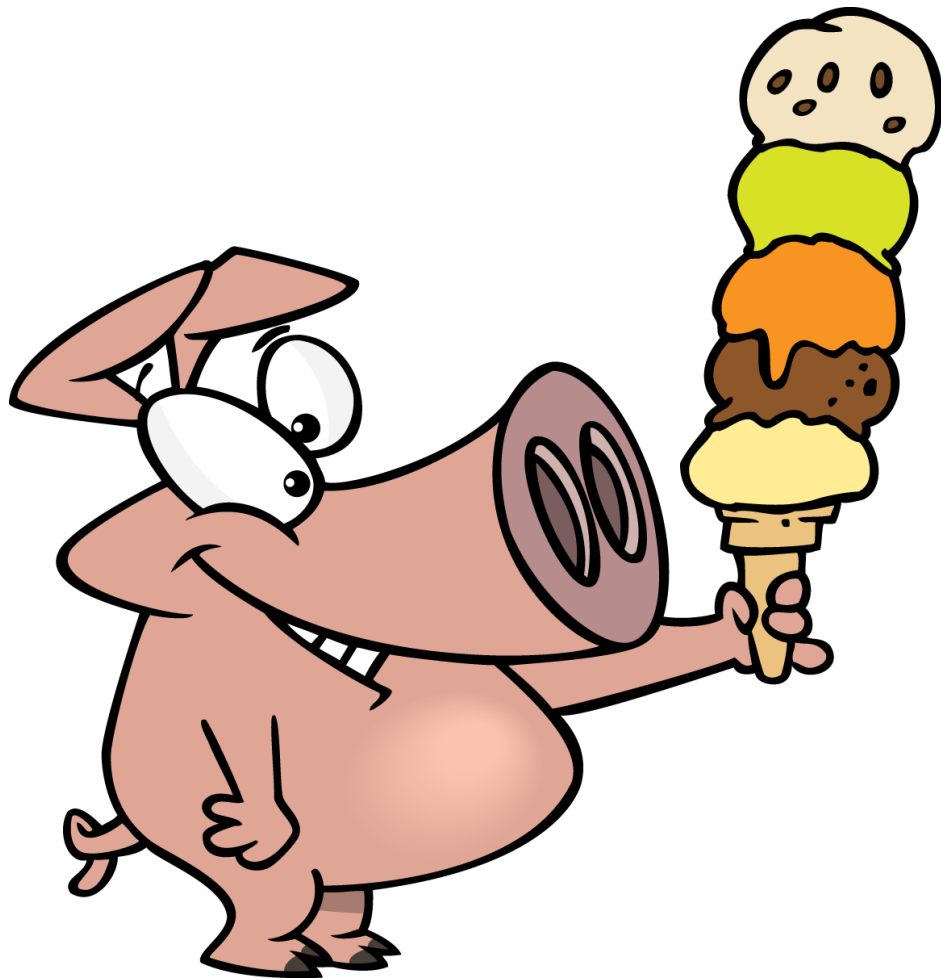
seesaw



play



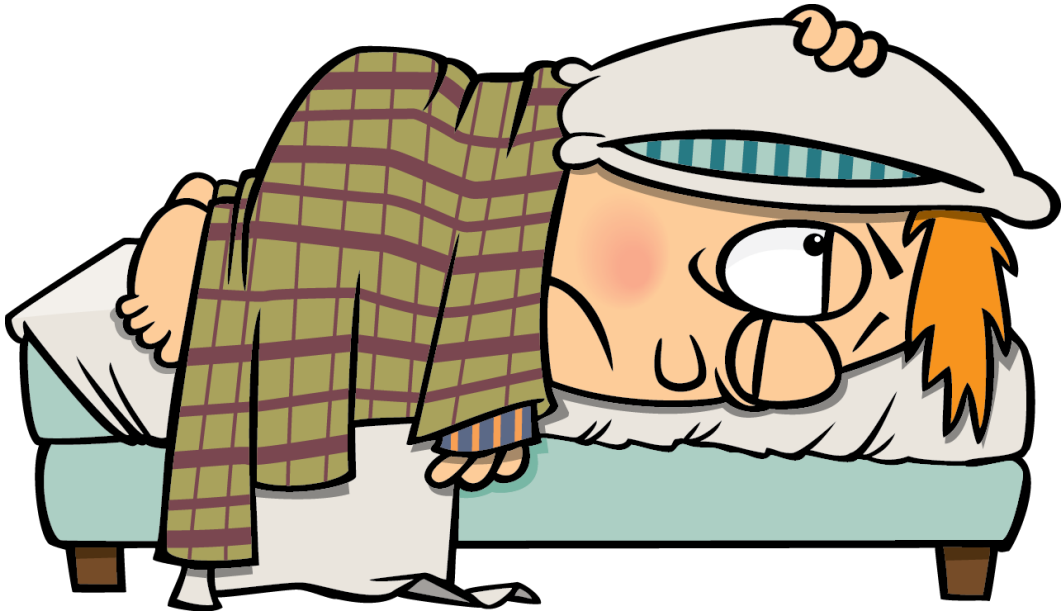
r e a d



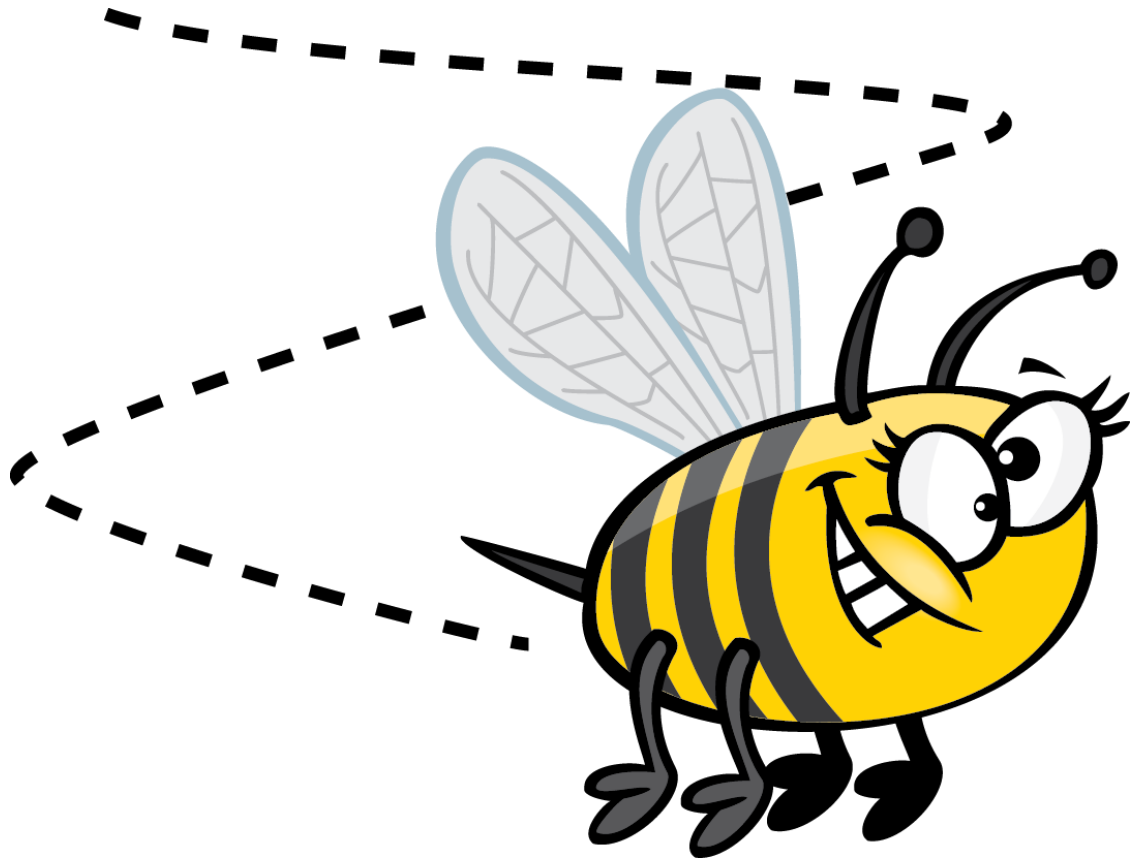
ice cream



treat



bed



b ee





seed



green



sleep



f e e t



shell



pretend



tent



mess

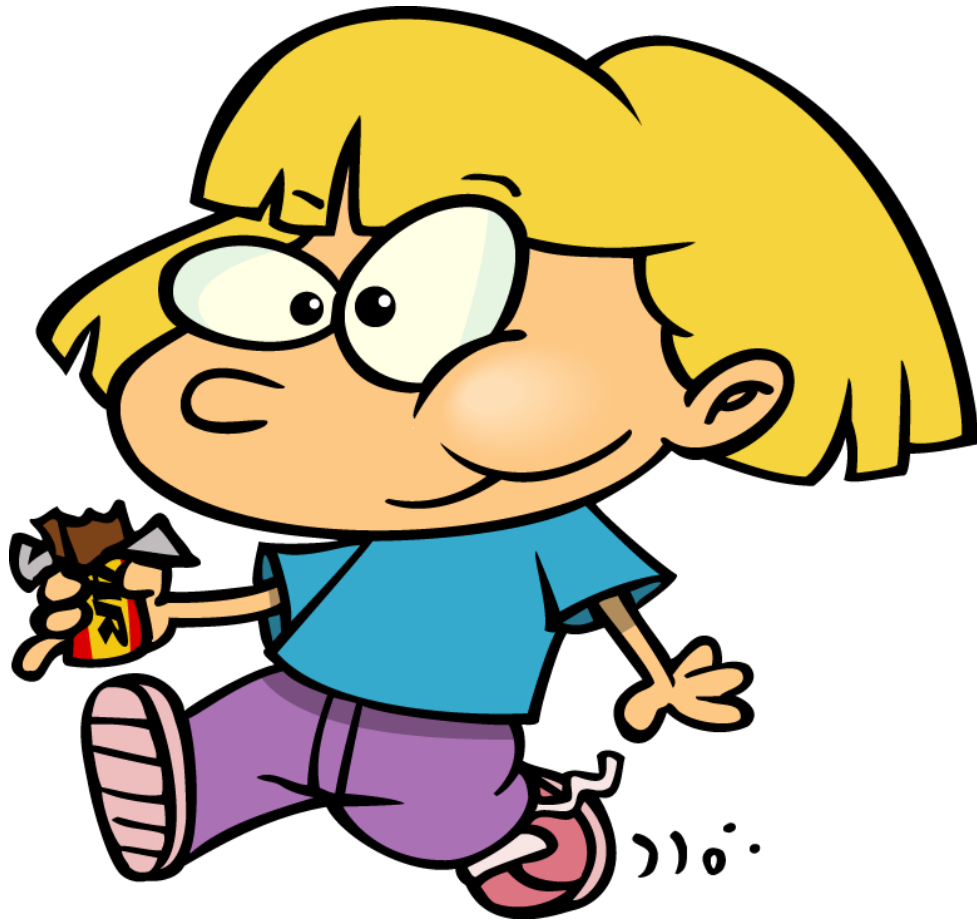




nest



wet



chew



mice



chick



hid

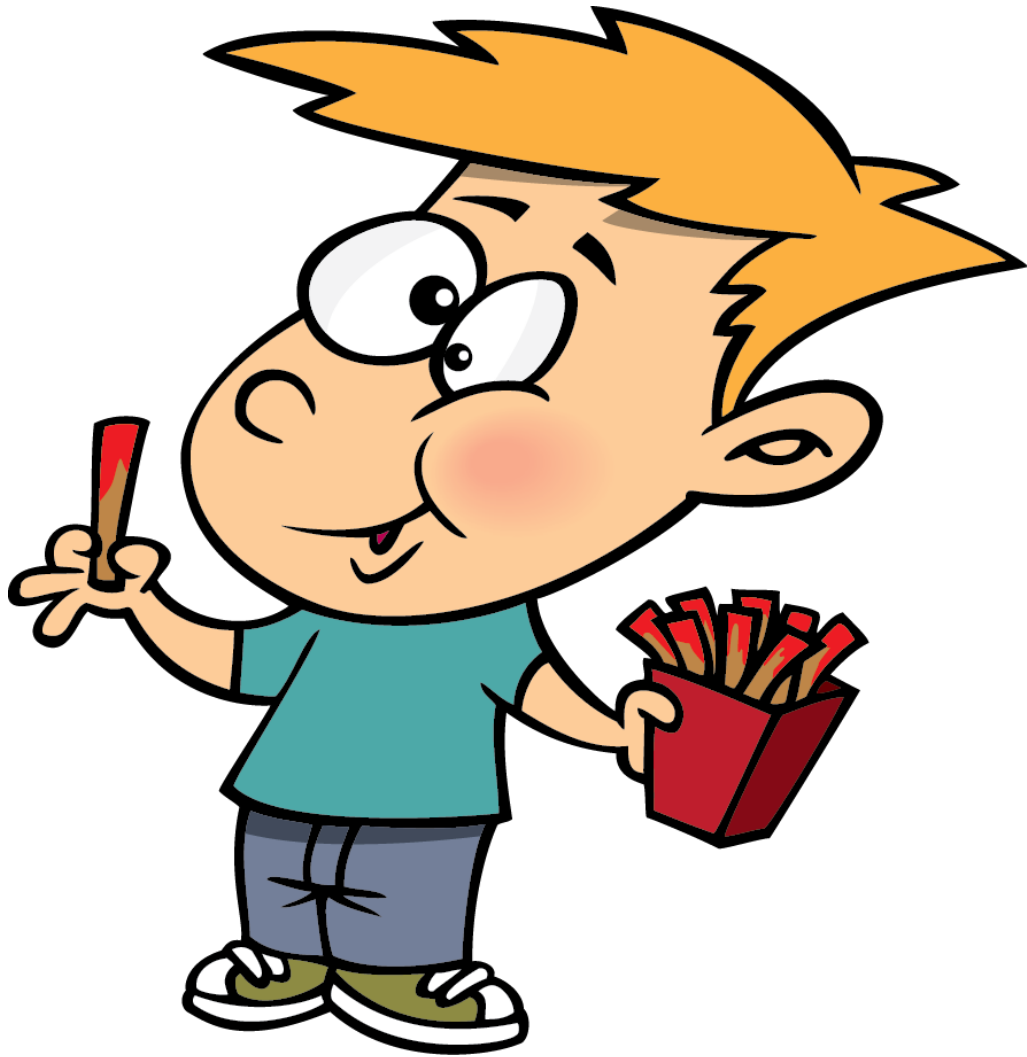


slide



tie





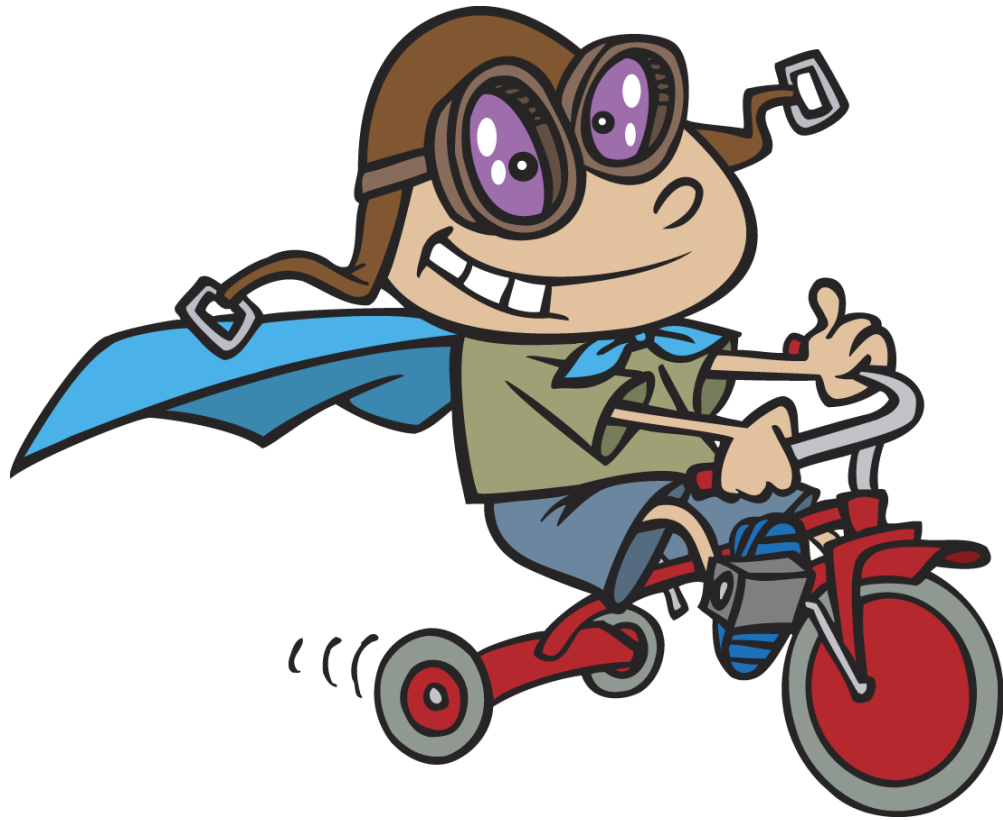
fries



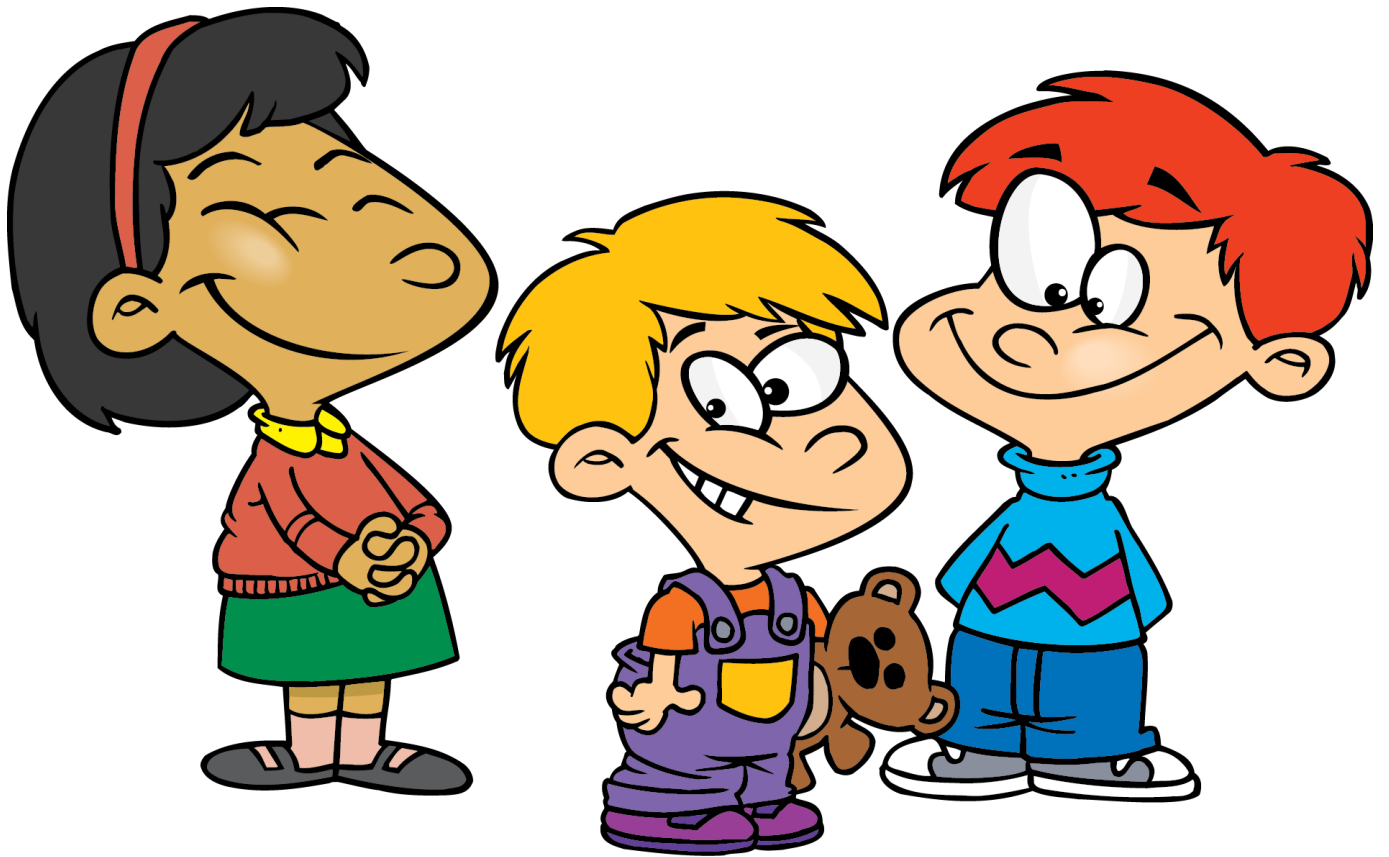
pig



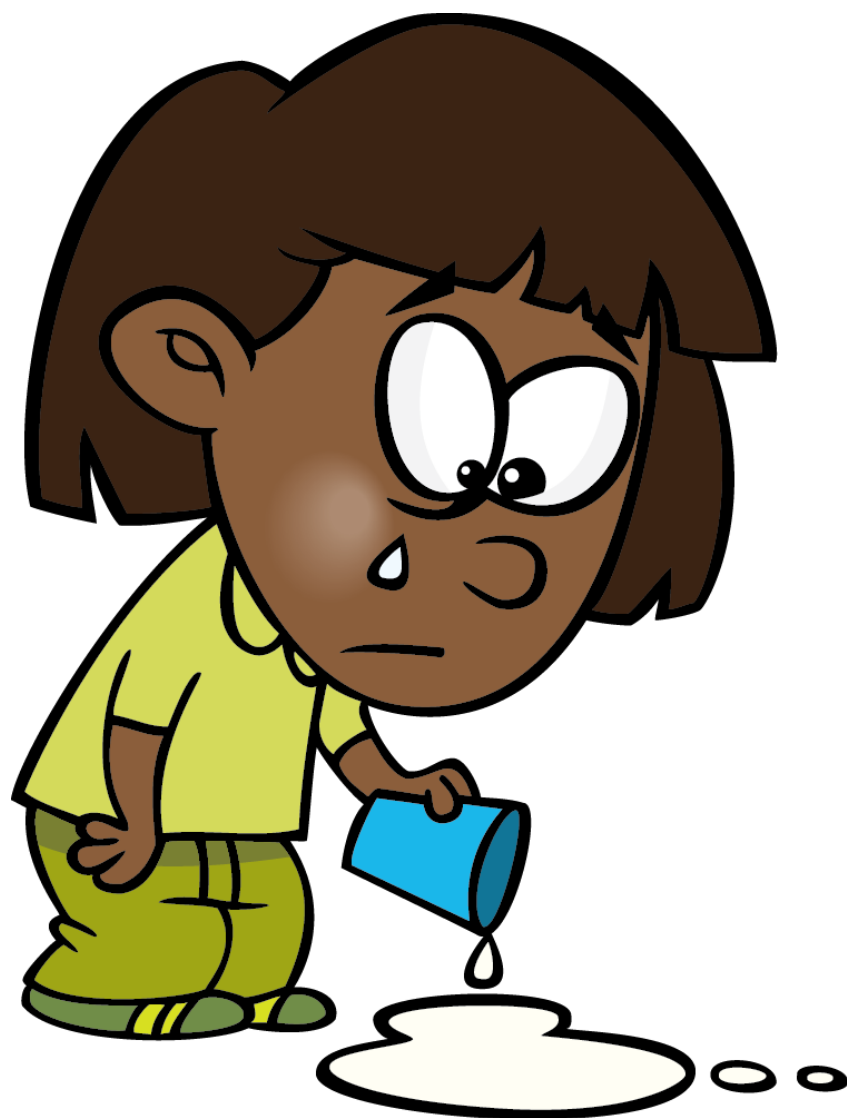
fight



trike



smile



spill



dime

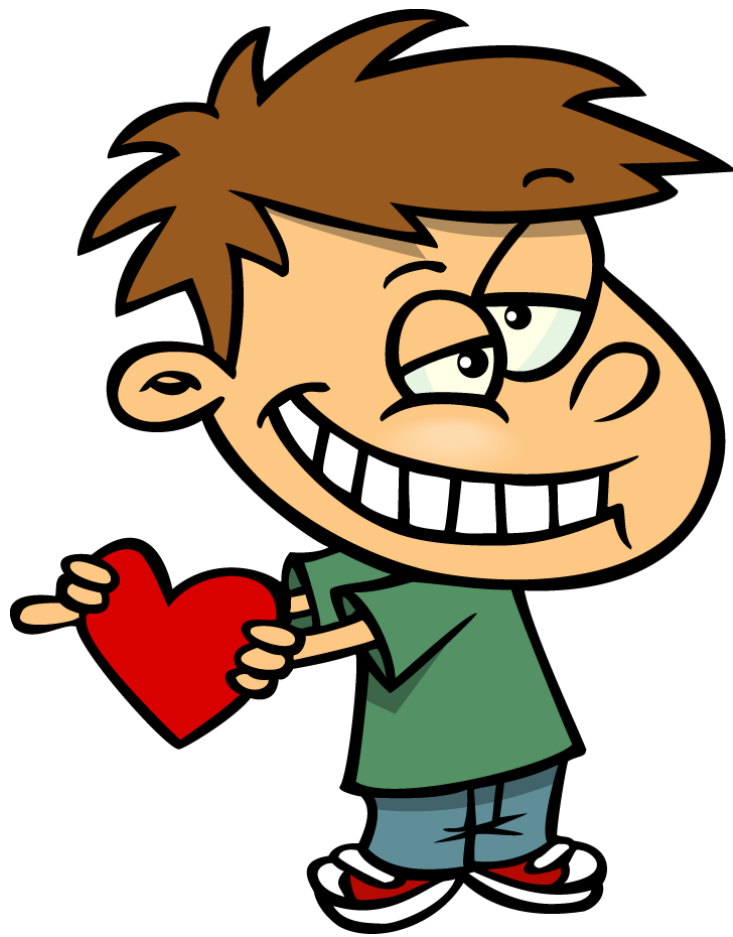


violin

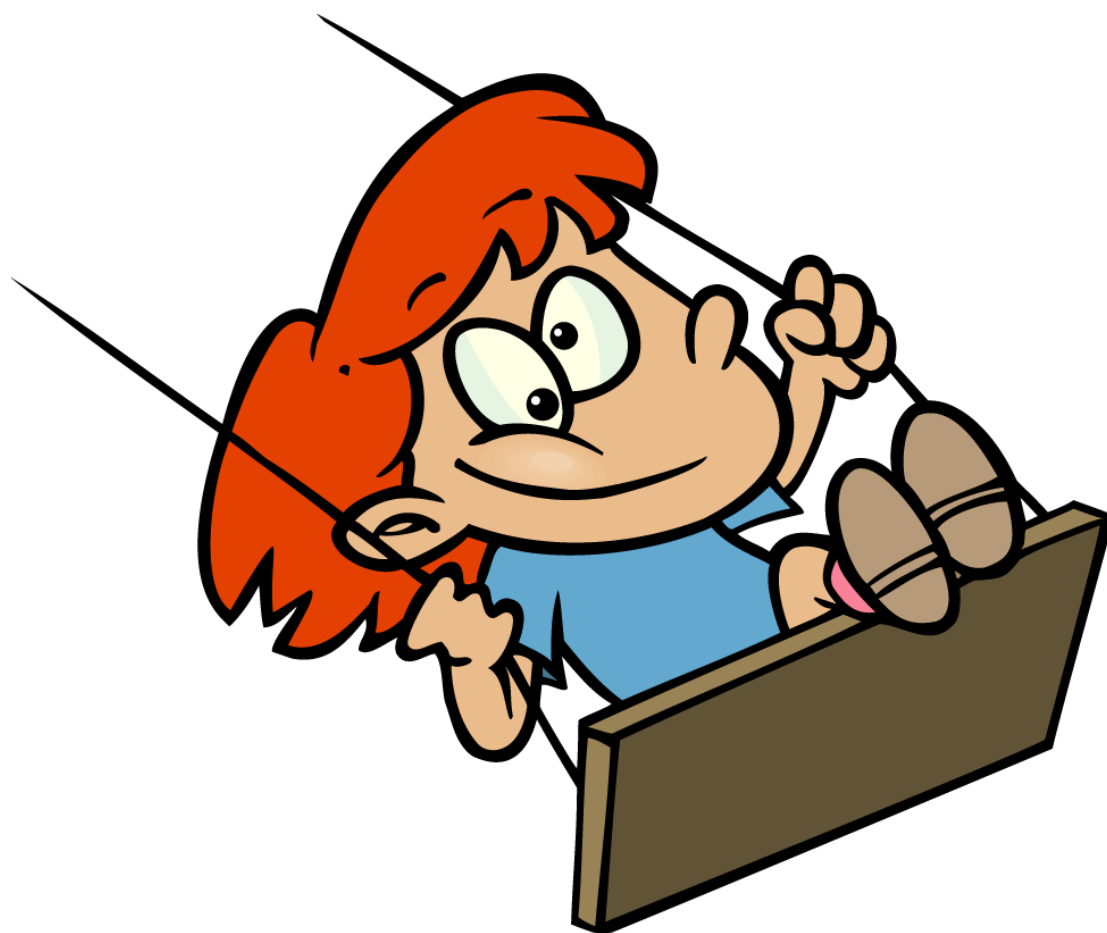




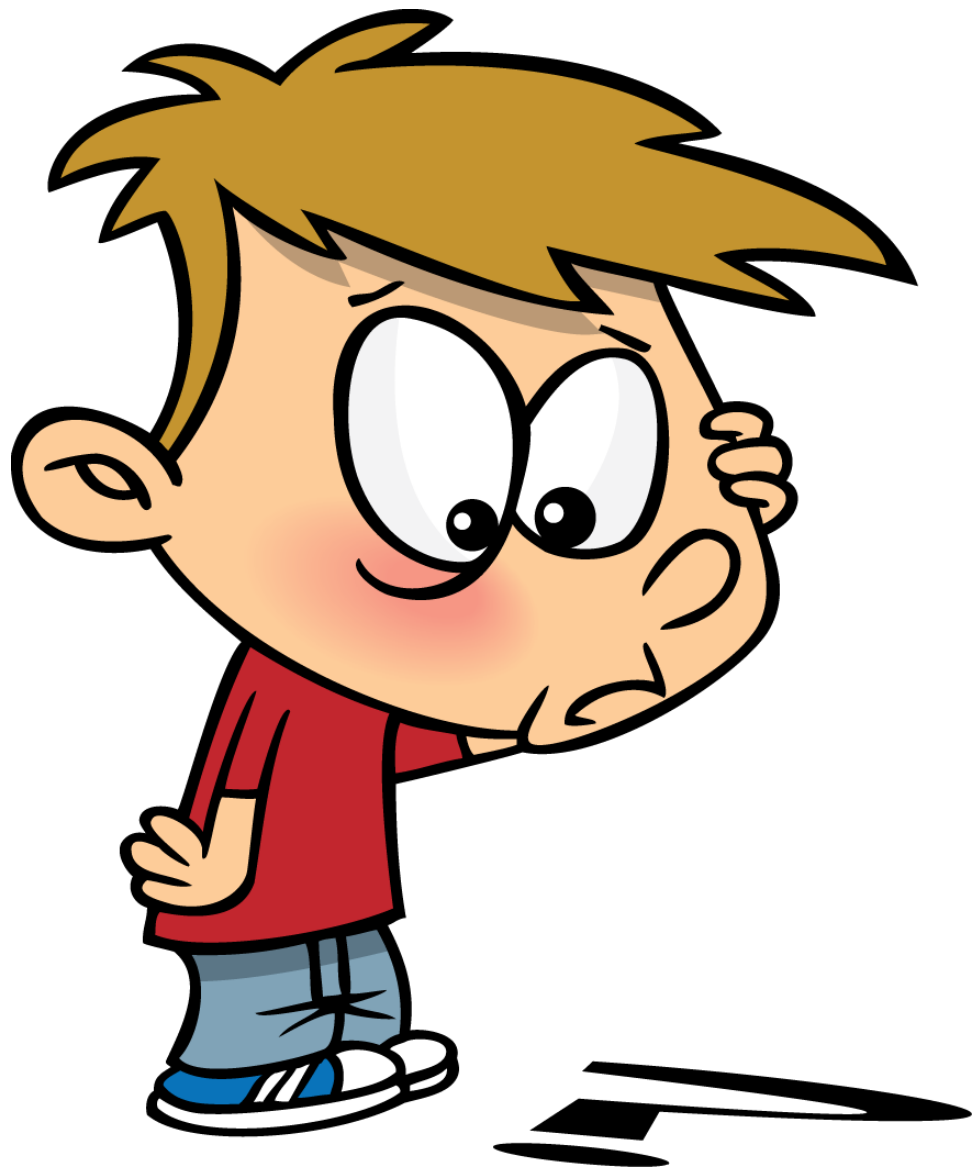
find



Be Mine



swing



think



sip



hit

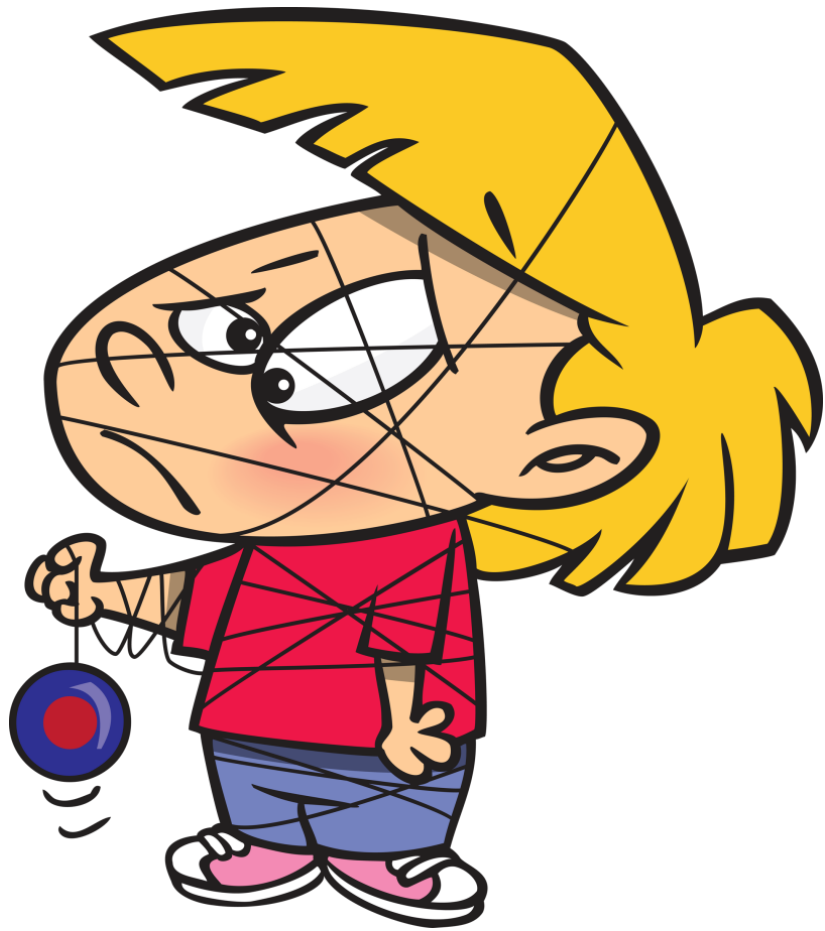


kite



dive





yoyo



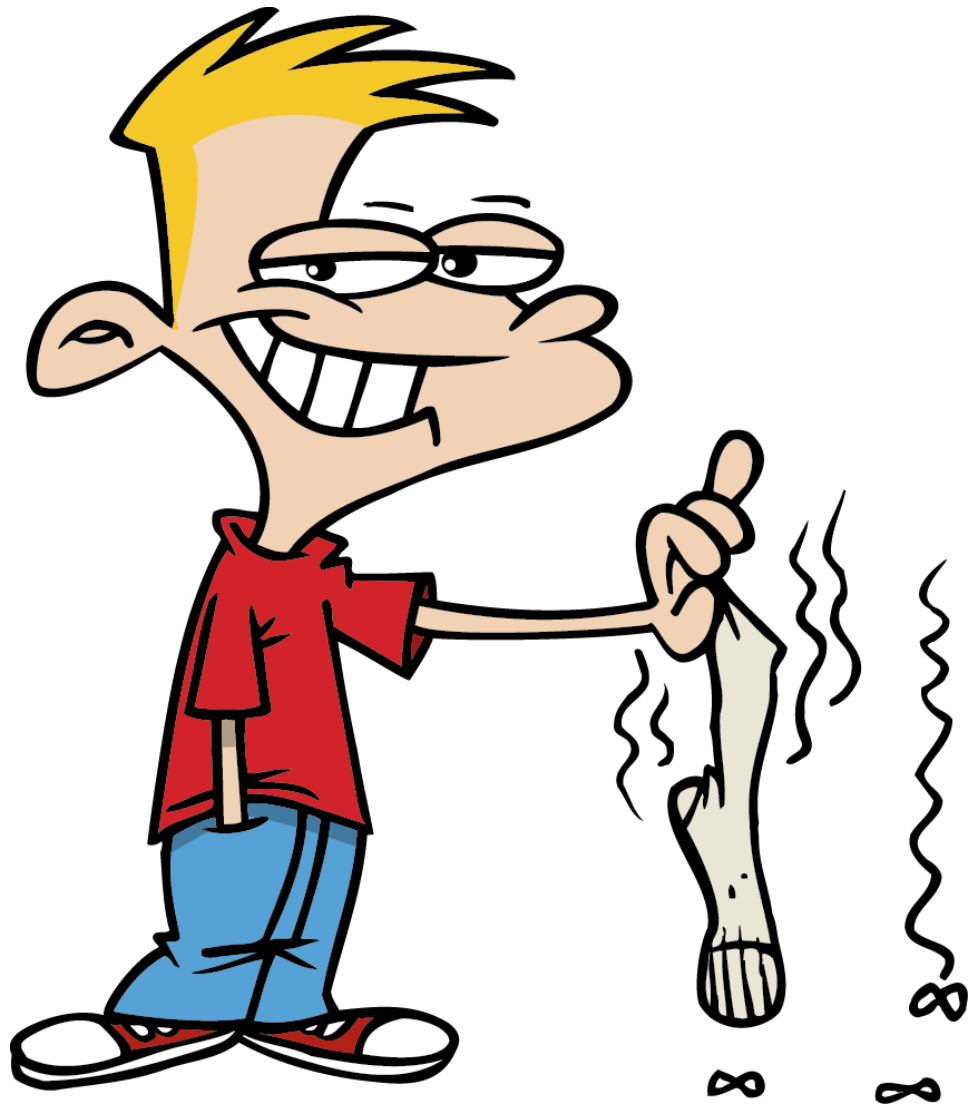
goat



bob



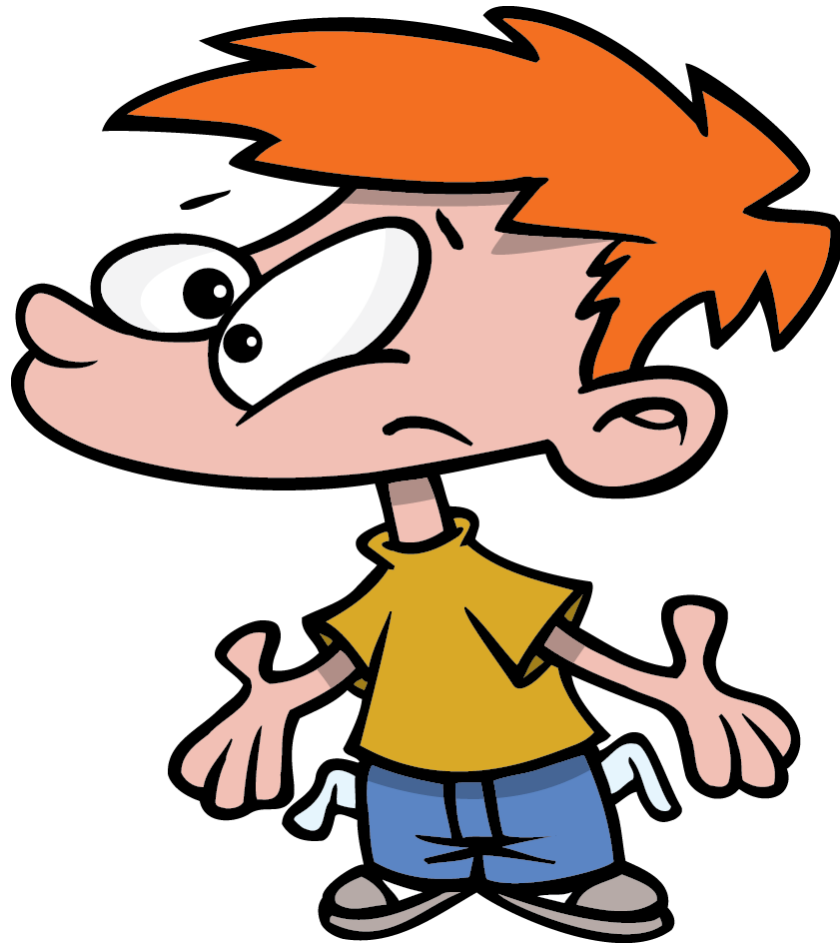
globe



sock



jog



broke



hold

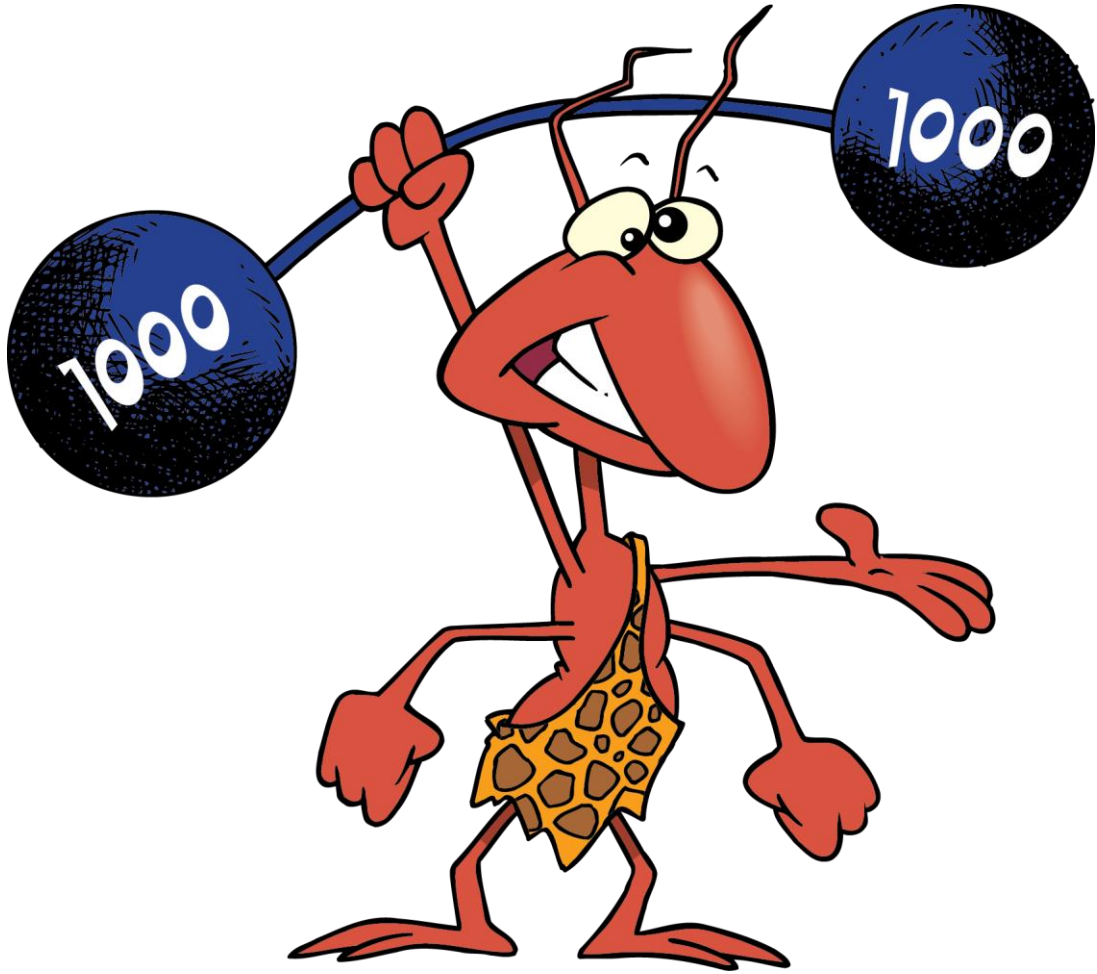




pole



phone



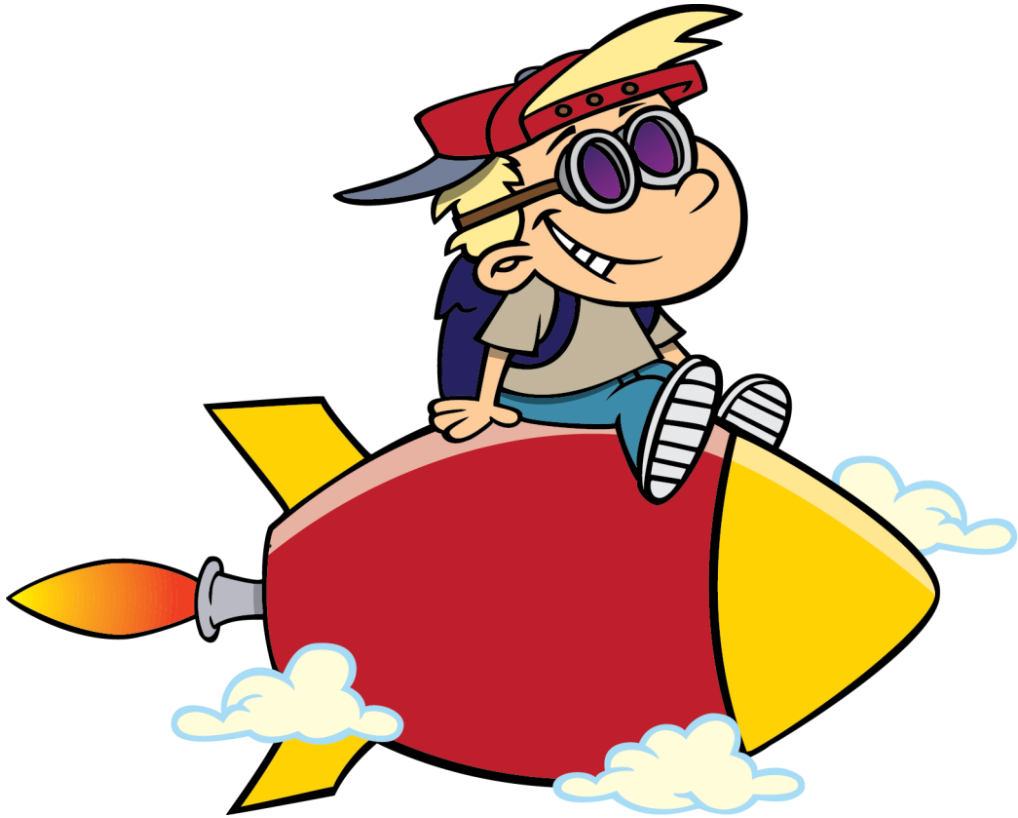
strong



b oo



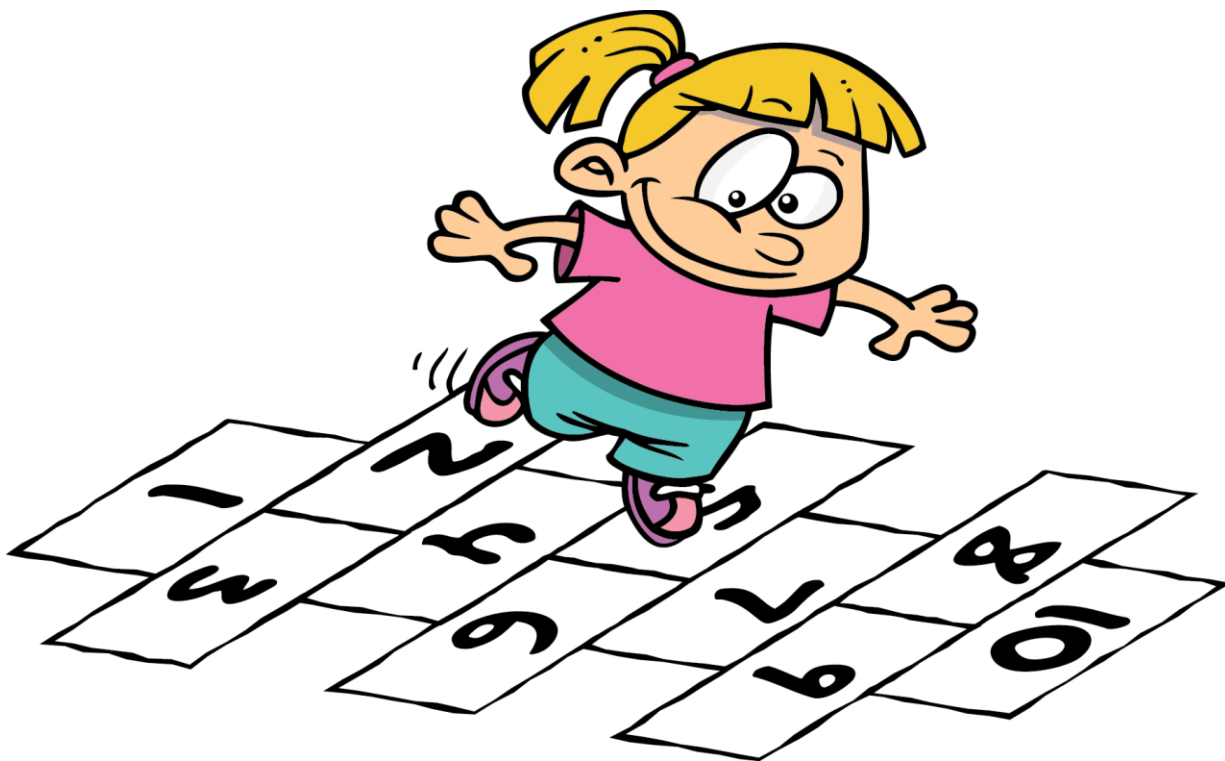
book



**z**oom



balloon



hop





chore



horn



scope



hose



robot



remote

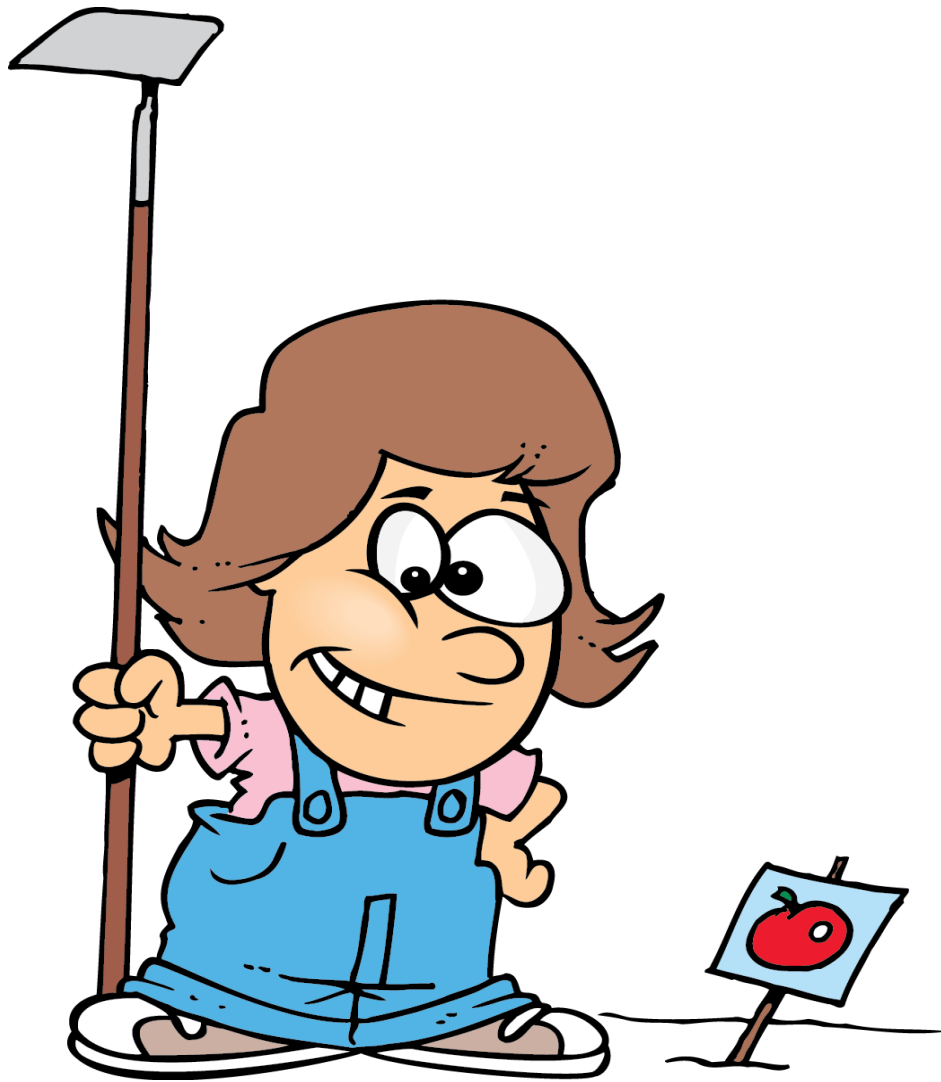


**f**ound



scout

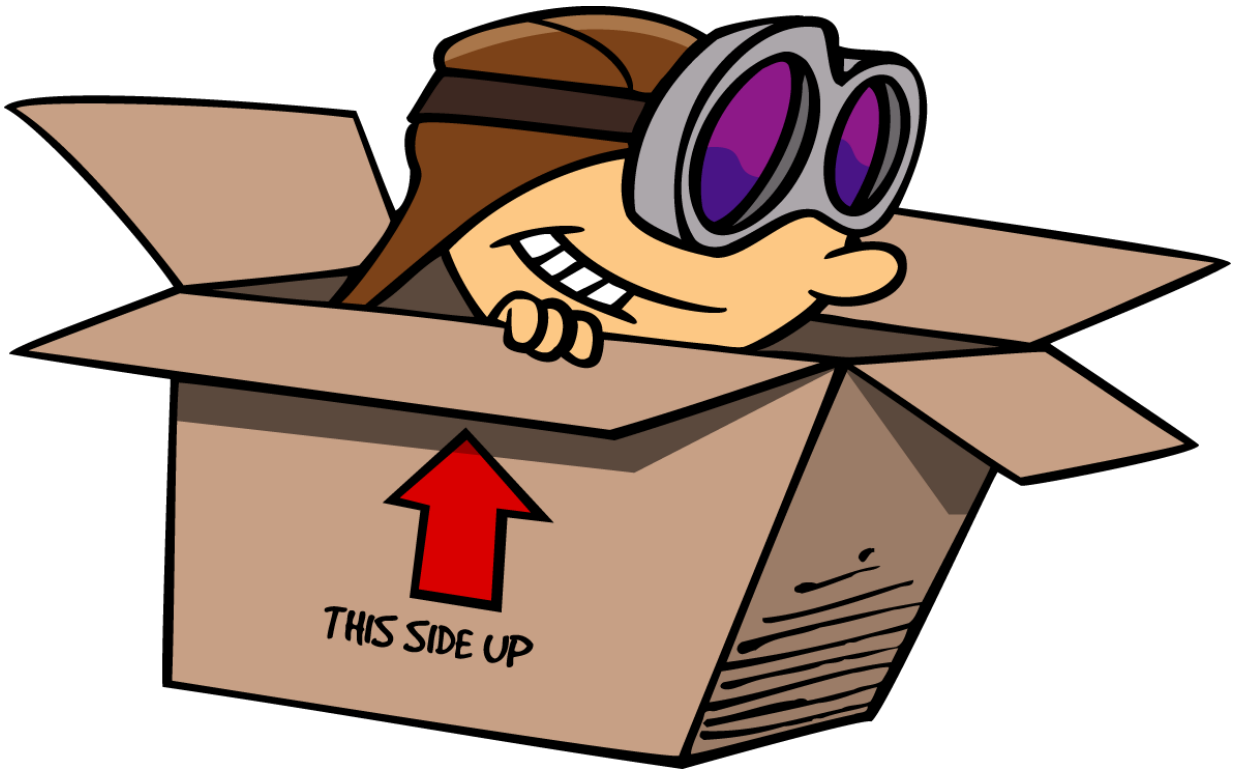




grow



gown



b o x



j o y



scrub



yuck



tug



gum

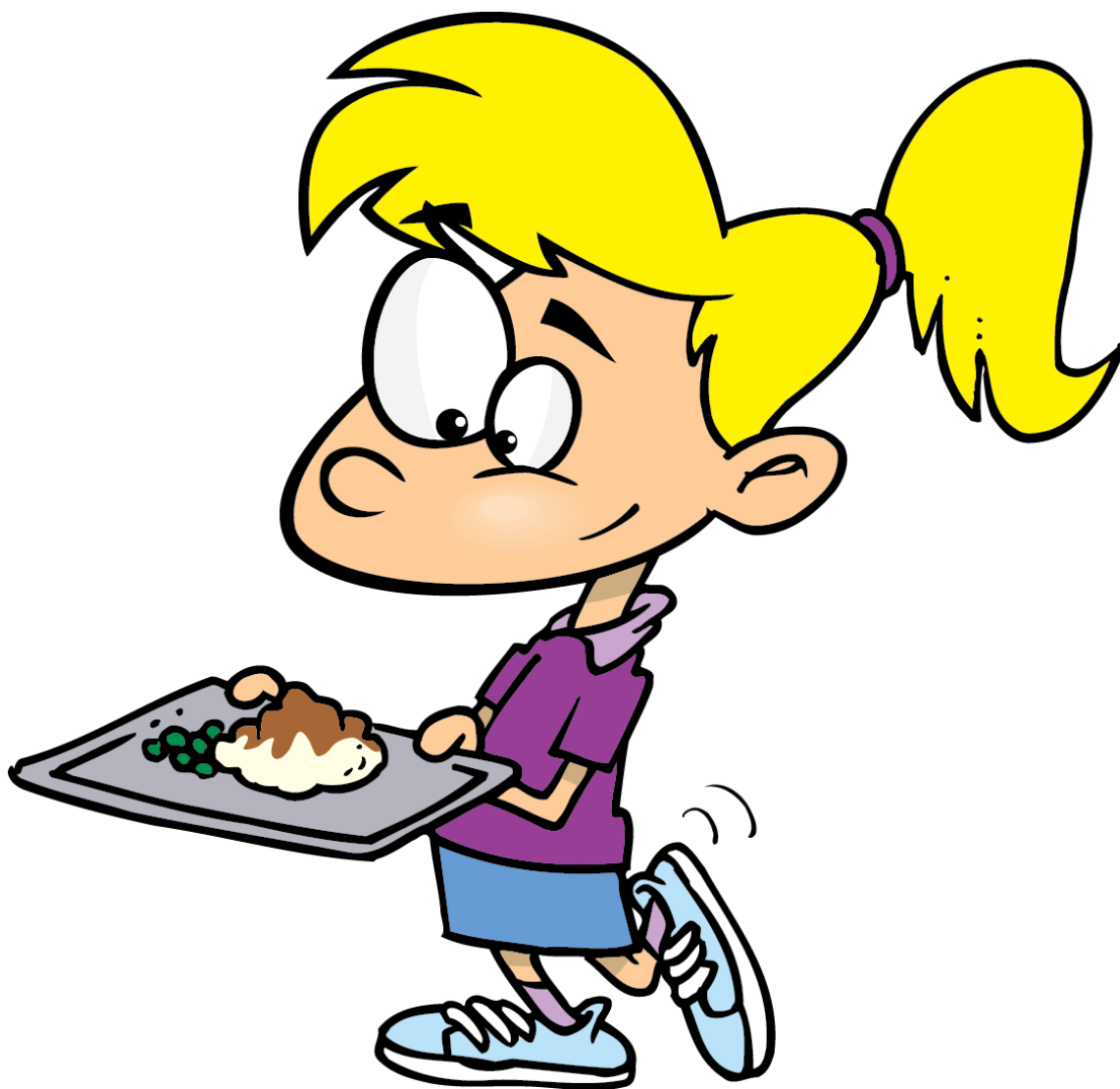




jump



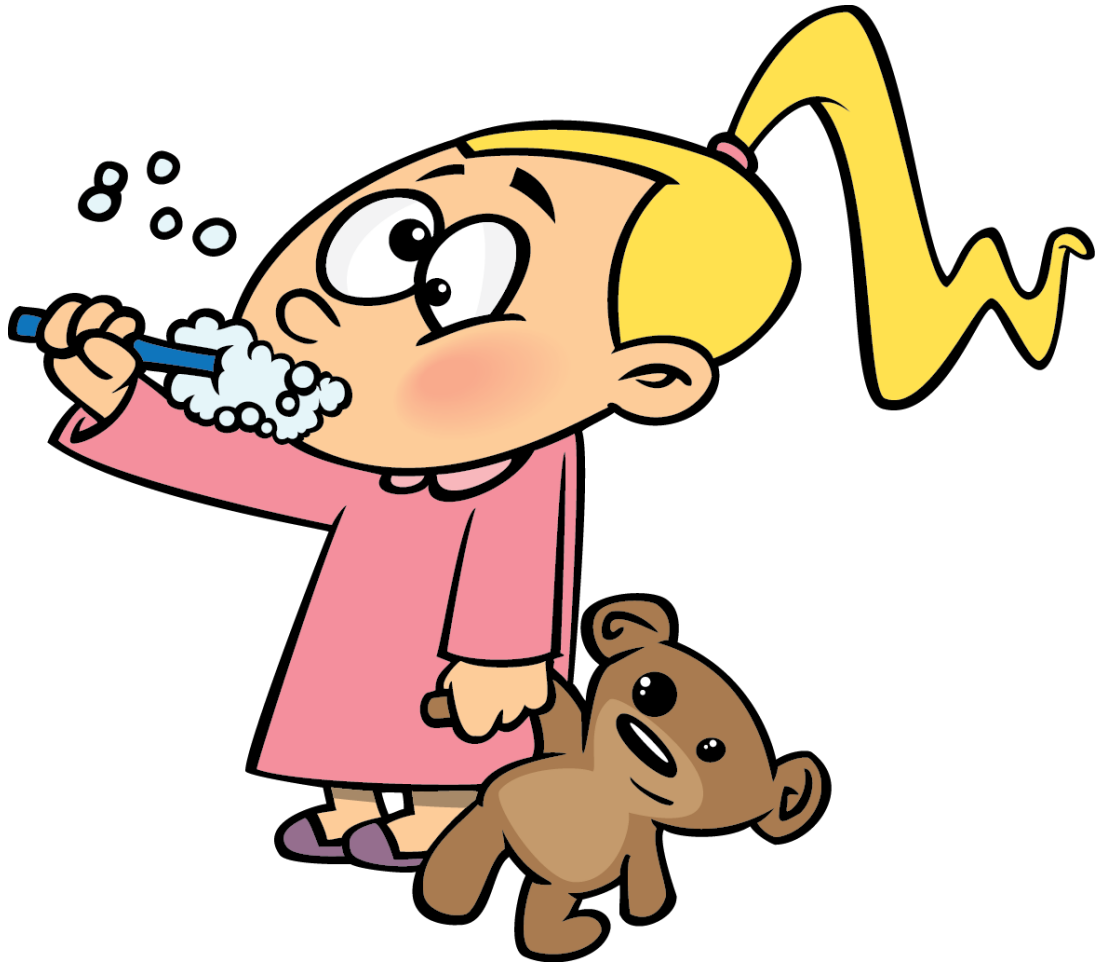
run



lunch



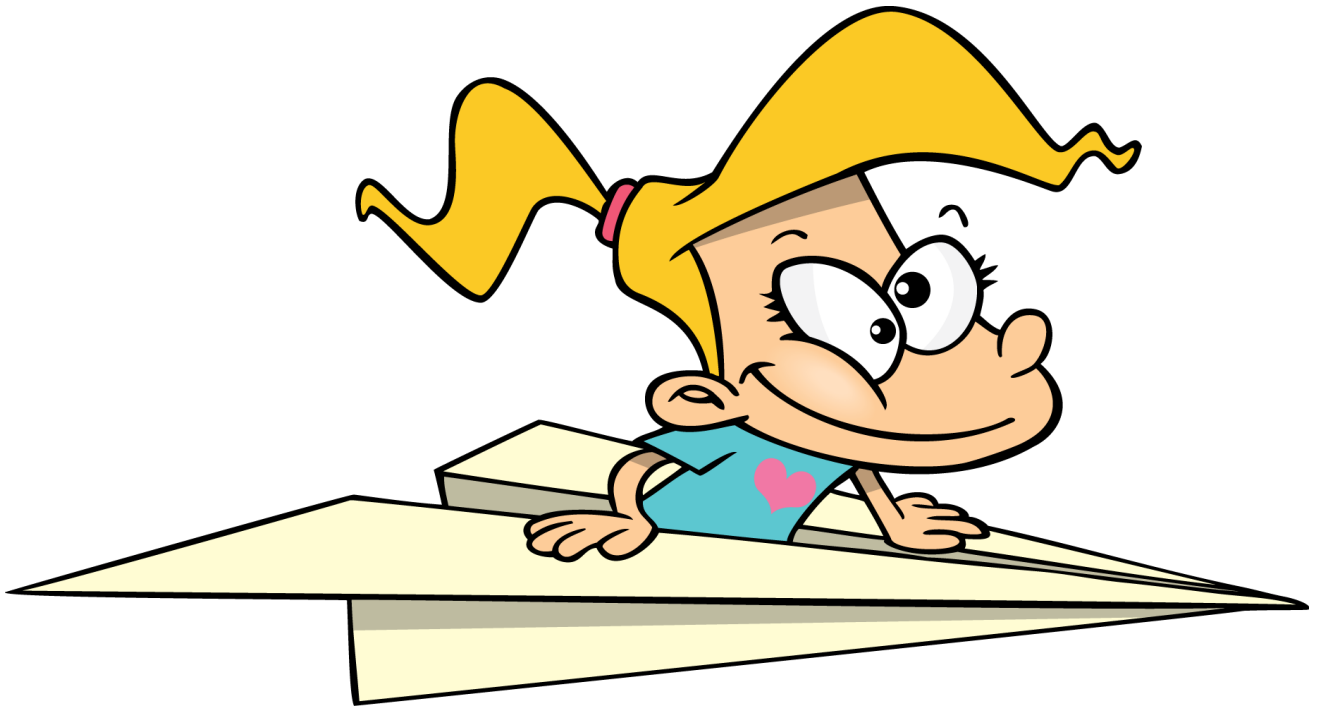
junk



brush



cut



fly