

Bossy R (or)

Kid Cards

Use the "Bossy R" kid cards to supplement instruction when teaching and reviewing the concept of R-Controlled vowels. It is recommended that teachers print the set in color on cardstock and laminate for durability.

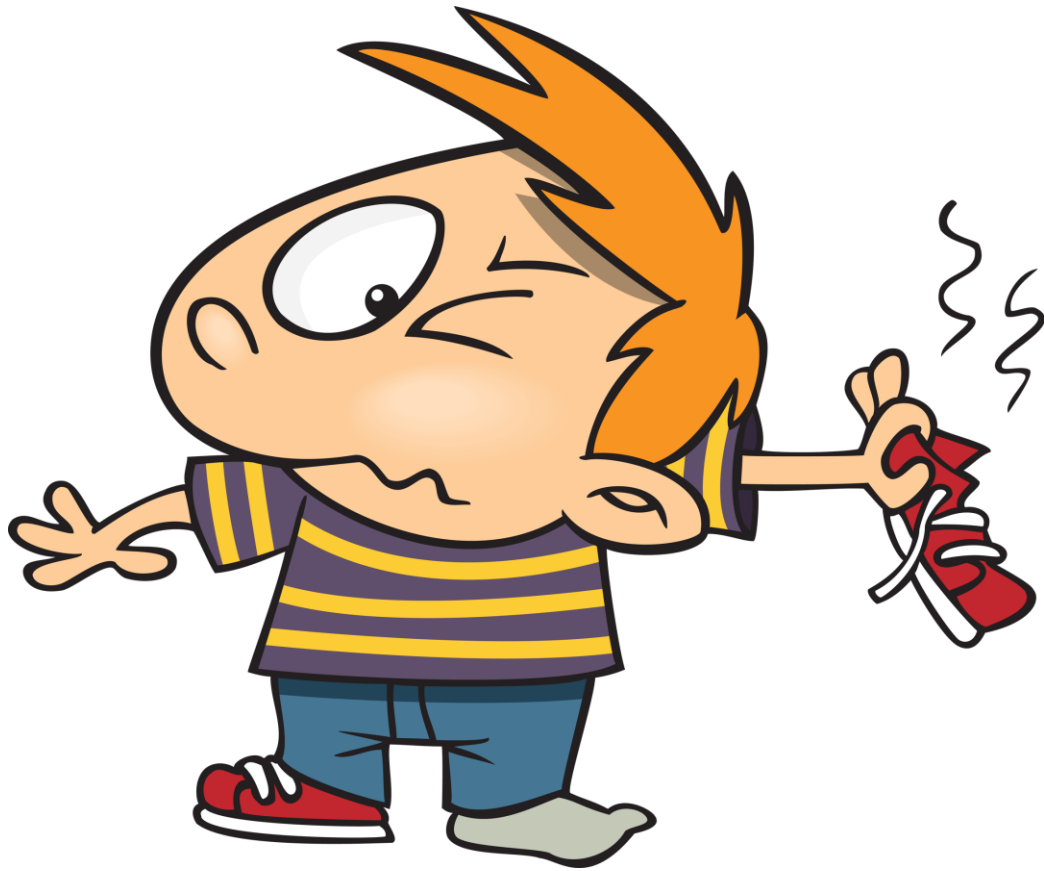
Assembled by Cherry Carl

Illustrated by Ron Leishman

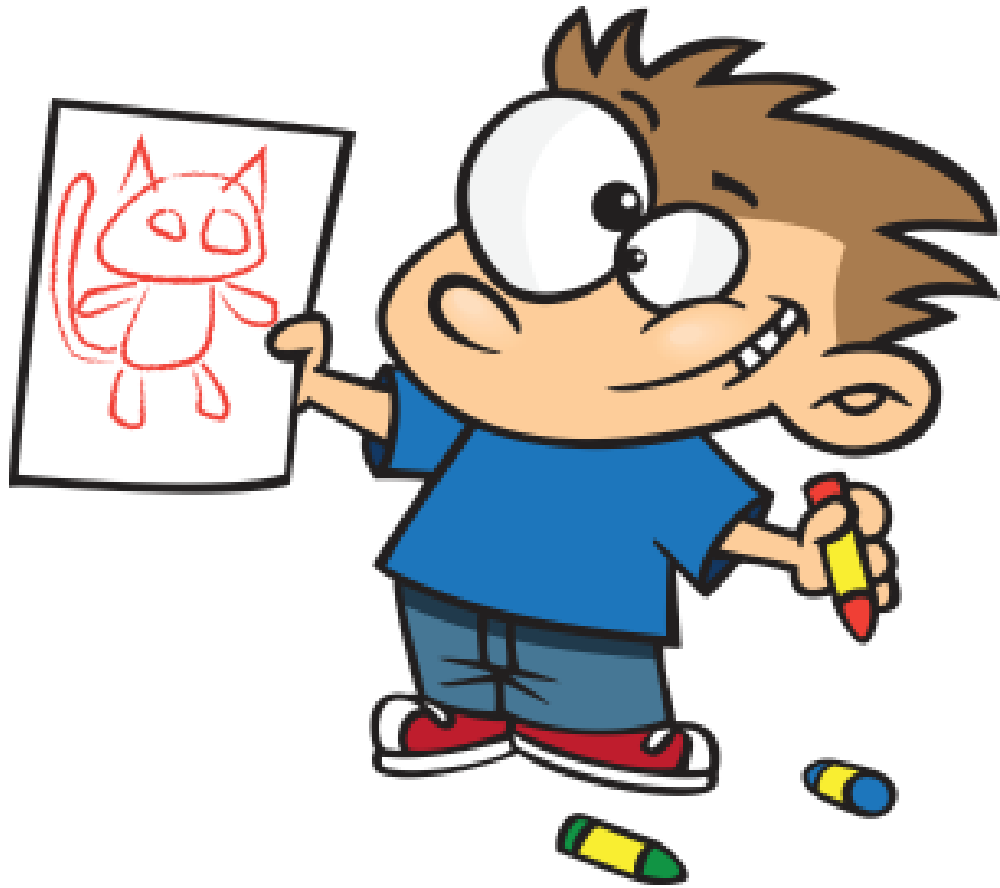
Images©Toonaday.com/Toonclipart.com



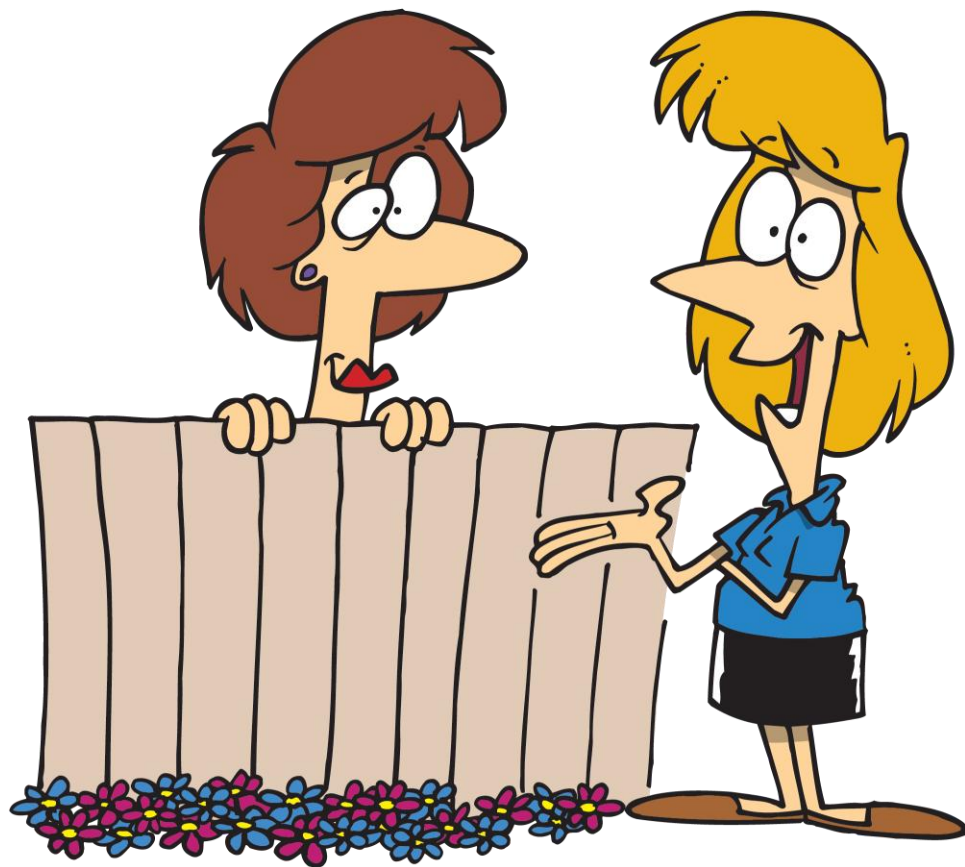
chore



odor



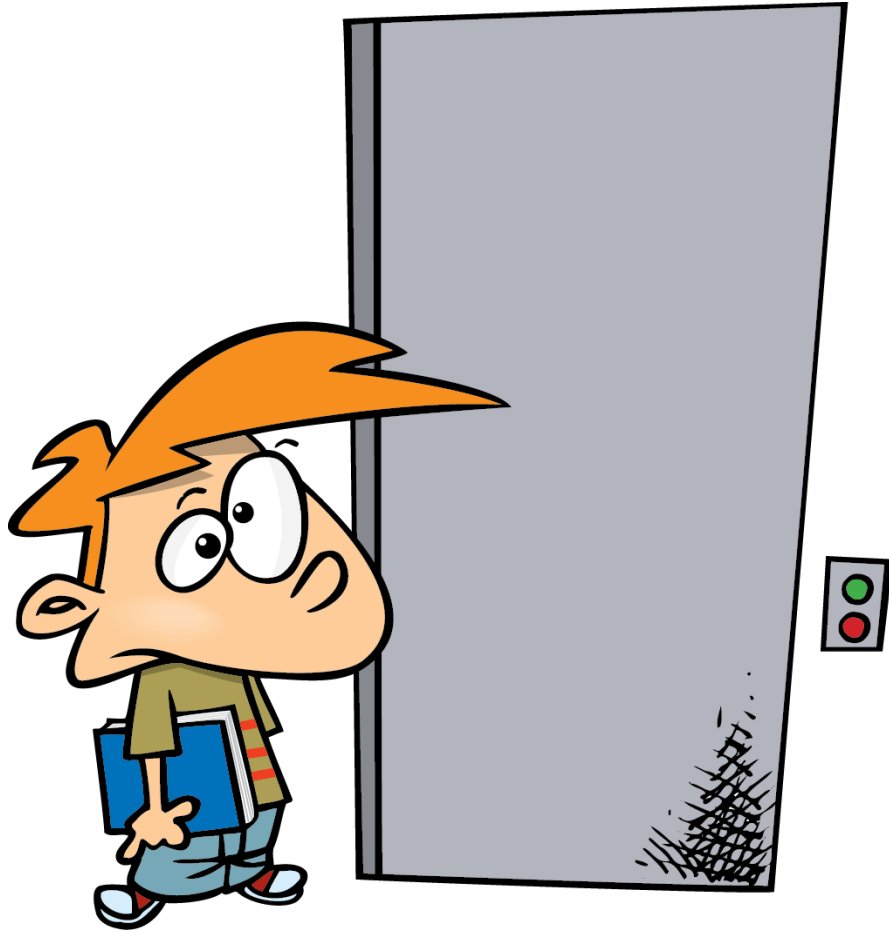
color



neighbor



doctor



elevator



emperor



popcorn



horn



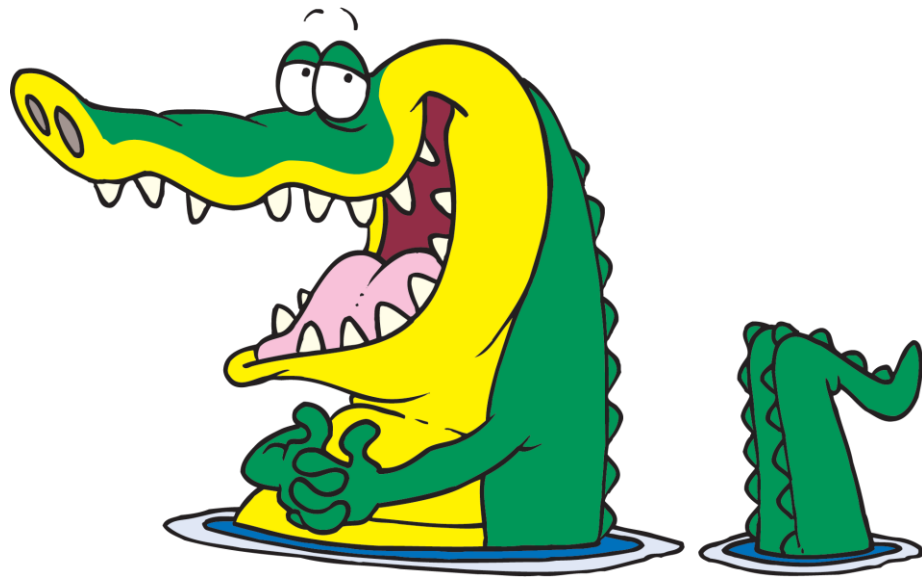
actor



horse



scissors



alligator



mirror



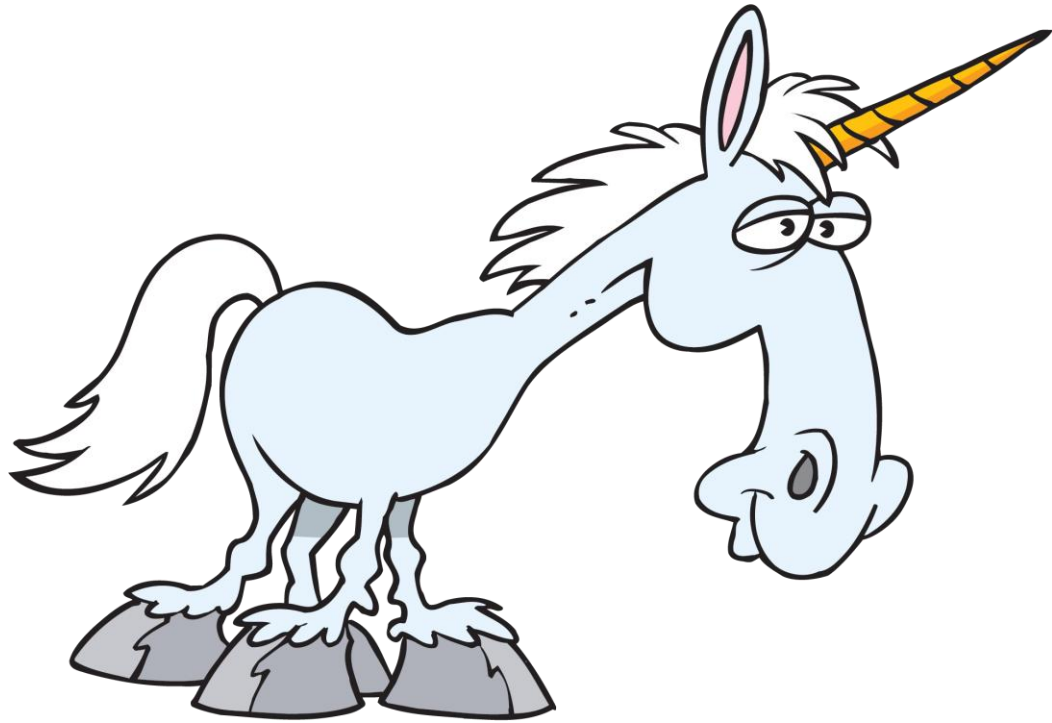
report



seashore



score



unicorn



uniform



victory